

Affiliation No : 330881

**GD GOENKA PUBLIC SCHOOL**

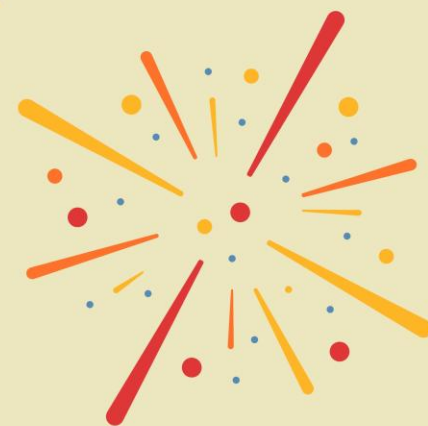
Under the Aegis of G D Goenka Group , New Delhi

**PURNEA**

**DIWALI & CHHATH  
HOLIDAY ENGAGEMENT**

**2024-25**

**GRADE - VI**



**HIGHER > STRONGER > BRIGHTER**

**Dear Parents,**

As we celebrate the festival of Diwali & Chhath, we want to extend our warmest wishes to you and your families. In light of the holiday season, we have assigned a special Diwali homework for your child. This assignment is an attempt to channelize the creative energy of the children, and we encourage you to engage with them in this learning process. We hope you have a joyful and safe Diwali celebration with your loved ones.

Instructions for students:

1. Homework should be completed as per the given instructions, whether on A4 paper, Chart Paper, in a notebook, or on a computer.
2. It should be labelled properly indicating the name, class and section of the child.
3. Homework will be assessed based on neat handwriting, presentation, creativity, and timely submission of the work.
4. Revise the syllabus for the PT3 Examination and prepare thoroughly for it.
5. Spend time with family and friends to make this festive season joyful and cheerful.

**HOLIDAY ENGAGEMENT****2024-2025****Grade-VI****ENGLISH****A. Project: Unveiling the Secrets of the Pharaohs : A Mummy Tomb Creation “****Objective:**

To learn about mummies and their significance in Ancient Egypt.

To explore the mummification process and the associated myths, particularly the "Curse of the Pharaohs."

To express your understanding creatively through the construction of a Mummy Tomb.

**Instructions:****1. Research Mummies:**

Research how mummies were made in Ancient Egypt. Focus on the embalming process, the purpose of mummification, and the significance of mummies in Egyptian culture. Learn about the "Curse of the Pharaohs," the myth surrounding the tombs of ancient Egyptian kings and queens.

**2. Create a Mummy Tomb:****Materials Needed:**

A shoe box or a small cardboard box (to create the tomb).

Clay or rolled paper (to create a small mummy figure).

Cloth strips or tissue paper (to wrap the mummy).

Markers, paint, or colored pens (to decorate the tomb and create Egyptian symbols).

Optional: Fake jewels, small treasures (to simulate items buried with Egyptian pharaohs).

Glue and scissors (for assembling the tomb and mummy)

**Steps to Create the Mummy:**

1. Create the Mummy: Mold a small mummy using clay or roll paper to form a cylindrical shape. Wrap it in cloth strips or tissue paper to resemble the bandages used in mummification. Make sure to leave the face exposed to highlight the mummy's features.

2. Design the Tomb: Use the shoe box or small box to create the tomb. Decorate the inside with Egyptian symbols like hieroglyphs, the Eye of Horus, or images of pharaohs. Use gold and black colors for an authentic Egyptian look



3. Add Items to the Tomb: Place some fake jewels, small items, or figurines inside the box, simulating the treasures and personal items that Egyptians often buried with their kings and queens.

4. **Presentation:** Once your mummy and tomb are completed, ensure they are neatly arranged inside the box. Display your tomb with creativity, adding any extra details like small "artifacts" or symbolic elements from Egyptian culture to enhance the overall look.



**B. Convert the following sentences from active voice to passive voice.**

1. The teacher explains the lesson.
2. The students are reading a book.
3. My mother bakes a cake.
4. The chef cooks delicious meals.
5. The dog chased the cat.
6. They will finish the project next week.
7. The police caught the thief.
8. The workers built a new bridge.
9. The principal announced the results.
10. I completed my homework last night.

c. Students are required to submit 15 pages of English writing using cursive handwriting (joined letters) in separate notebook.

**MATHEMATICS****A. Solve the following in your notebook:**

1. Add  $3x$  and  $43x = \dots\dots\dots$
2. If  $a = 2$  and  $b = 3$  find the value of  $5a^2 - 2ab = \dots\dots\dots$
3. Write all the terms of algebraic expression  $4x^5 - 6y^4 - 7xy - 9 = \dots\dots\dots$
4. Identify the monomial, binomial and trinomial in the following -  
 $-2xyz$ ,  $a-b-4c$ ,  $x^5 - 3x$ .
5. Write the constant term of:  
 $3x^2 - 3x - 8$ ,  $5y^2 - 3y - 167$
6. Subtract the sum  $5x-4y-2z$  and  $-6y-2y-4z$  from the sum of  $-3x-2y-4z$  and  $-3x-8y-2z$ .
7. By how much does 1 exceed by  $2x-3y-5$ .
8. If  $x = 1$ ,  $y = 2$  and  $z = 5$  find the value of  $2x^2y - 5yz - xy^2$
9. How much less than  $x-12y-5z$  is  $12x-3y-4z$ .
10. Add:  $3a-2b-5c$ ,  $-6a -ab -8b$ ,  $-4a-ab-12c$

**ACTIVITY**

- B. Make a list of vegetables or fruit (minimum 8 items) available at home in a tabular form. Create a table to list each item, its quantity, and compare it to another item using a ratio (e.g. what is the ratio between ratio of 1<sup>st</sup> quantity to that of 2<sup>nd</sup> ). Perform this task in your notebook.**

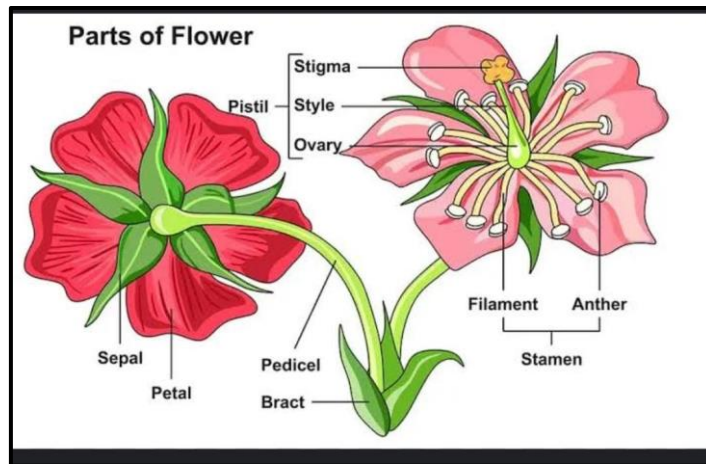
ITEMS	QUANTITY (in kgs)
APPLE	5kg
GRAPES	6kg 500gms

**Find the ratio of weight of apple to that of grapes also for other items.**



## SCIENCE

1. Take a complete flower. Separate the four whorls. Press them between the pages of your book for a few days to dry them. Stick them with sticky tape in your scrapbook. Write few lines for each of them.



### 2. Choose the correct answer-

i) Which part of the plant is responsible for photosynthesis?

- a) Root
- b) Stem
- c) Leaf
- d) Flower

ii) Which part of the plant anchors it to the soil?

- a) Leaf
- b) Stem
- c) Root
- d) Flower

iii) What is the main function of the stem?

- a) Absorption of water
- b) Support and transport
- c) Photosynthesis
- d) Reproduction

iv) Which part of the plant is responsible for reproduction?

- a) Leaf
- b) Stem



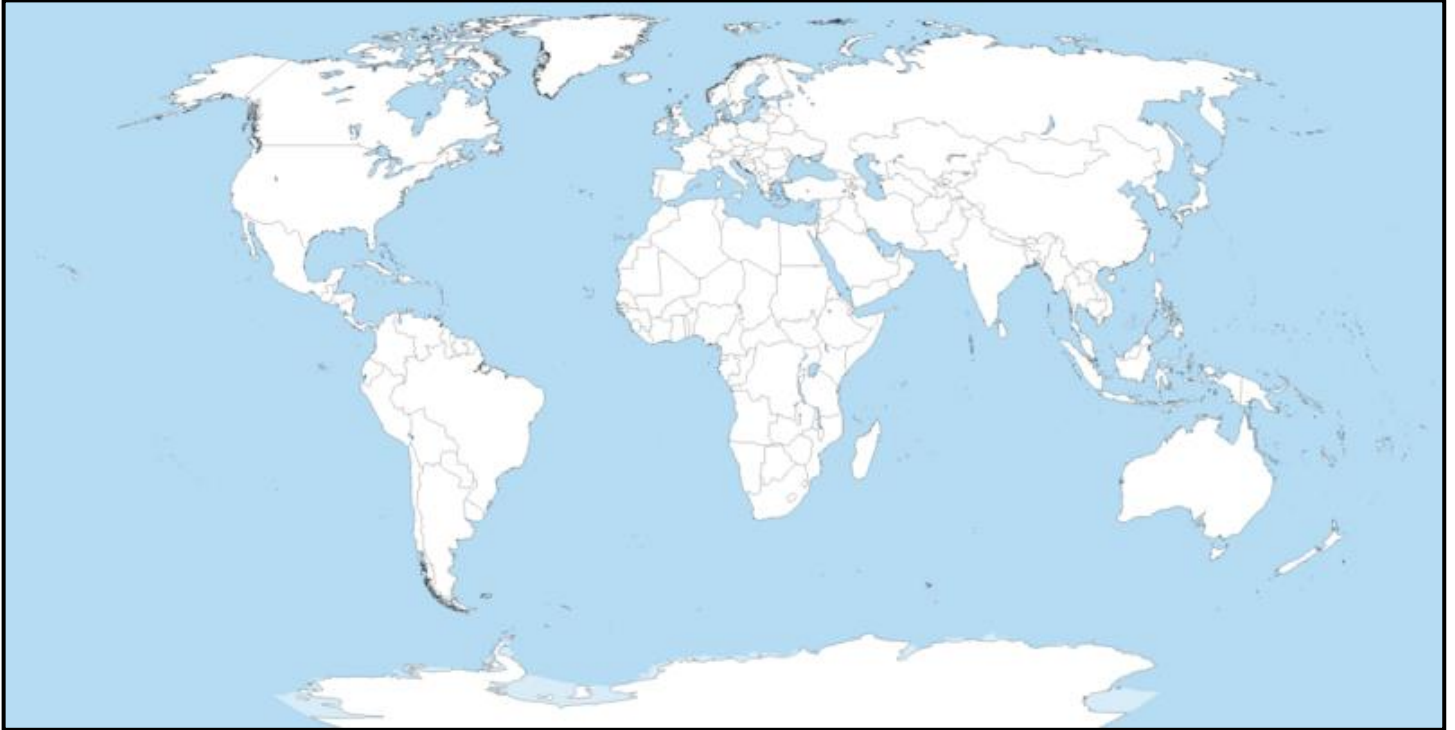
- c) Root
- d) Flower
- v) What are the small openings on the surface of leaves called?**
- a) Stomata
- b) Chloroplasts
- c) Veins
- d) Petioles
- vi) What are the two main parts of a stamen?**
- a) Ovary and style
- b) Anther and filament
- c) Petal and sepal
- d) Stigma and ovule
- vii) What is the green pigment in leaves called?**
- a) Chlorophyll
- b) Carotene
- c) Anthocyanin
- d) Xanthophyll
- viii) What part of the flower develops into a fruit?**
- a) Petal
- b) Sepal
- c) Ovary
- d) Stamen
- ix) What is the role of sepals in a flower?**
- a) Protect the bud
- b) Attract pollinators
- c) Produce pollen
- d) Store food
- x) Which part of the plant is responsible for making food?**
- a) Root
- b) Stem
- c) Leaf
- d) Flower



## SOCIAL STUDIES

A. "On a blank world map, mark the following locations:"

Europe, Asia, Antarctica, South America, Australia, Indian Ocean and Pacific Ocean.



### REVISION SHEET

Answer the following questions in your notebook.

1. The member of the panchayat is also known as \_\_\_\_\_.
2. The Mauryan rulers tried to control \_\_\_\_\_ and \_\_\_\_\_ which were important for transport.
3. People in forested regions provided the Mauryan officials with \_\_\_\_\_.
4. The major constituent of atmosphere by percent is \_\_\_\_\_.
5. The domain of the earth consisting of solid rocks is \_\_\_\_\_.
6. What is Gram Sabha?
7. What was the Ashoka's dhamma? What role did Ashoka play in promoting Ashoka dhamma?
8. What are the different layers of the atmosphere?
9. Why is the Northern hemisphere called the land hemisphere?
10. Why is the Biosphere important for living organisms?





## HINDI

1. विशेषण किसे कहते हैं? इसके कितने भेद होते हैं ? सभी भेदों की परिभाषा उदाहरण सहित चार्ट पेपर पर कलात्मक तरीके से लिखें।
2. 'बाग की सैर' विषय पर एक अनुच्छेद लिखिए जिसमें कम- से -कम 10 विशेषण शब्दों का प्रयोग कीजिए।
3. हिन्दी सुलेख की अलग कॉपी बनाएं एवं १५ पेज सुलेख लिखें ।

## COMPUTER

**Create a poster on Clean and Green Energy using the GIMP software.**

1. Open GIMP application.
2. Download relevant images for your poster.
3. Select the objects from the image using the Fuzzy Select Tool.
4. Copy the selection using the Edit > Copy option from the Menu bar.
5. Paste the selection by clicking on the Edit > Paste as > New Layer option from the Menu bar.
6. Now, use the Text Tool to type "Clean and Green Energy" on the canvas.
7. Use the Rectangle Select Tool to draw the border.
8. Save the file with a suitable name and bring the print out of the poster.
9. Print the same.



**SANSKRIT**

1. निम्न संस्कृत शब्दों के पर्यायवाची शब्द दी गई वर्ग-पहेली में से ढूँढकर लिखिए-

गा	स	रि	ता	ख	गाः	आ
त्र	अ	त	पः	रा	जा	चा
म्	प	र	अ	भू	क	र्यः
मा	न	वः	त्र	मिः	पिः	स
भ	ल	लु	कः	शं	क	रः
प्र	ता	पः	ह	र	त	अ
ग	ग	ने	रि	च	त्र	पि
रा	त्रिः	दि	णः	ना	कु	त्र

- i) मृगाः
- ii) वसुधा
- iii) गुरुः
- iv) वृक्षाः
- v) शरीरम्

**FRENCH**

**Mettez les verbes au présent: Conjugate the verbs in the present tense:**

1. J'..... une nouvelle robe. (Acheter)
2. Le cours ..... à 9h. (Commencer)
3. Il ..... beau. (Faire)
4. Nous ..... notre travail. (Commencer)
5. Les femmes ..... le ménage. (Faire)
6. Ils ..... un nouvel appartement. (Acheter)
7. Vous ..... une promenade. (Faire)
8. Il y a combien de jours dans une semaine? Nommez!
9. Il y a combien de mois dans une année? Nommez!
10. Identify the seasons! Describe them in 2 sentences each from textbook! - a. C'est l'été b. C'est L'hiver



Affiliation No : 330881

**GD GOENKA PUBLIC SCHOOL**  
**PURNEA**

Under the Aegis of G D Goenka Group , New Delhi



**HIGHER | STRONGER | BRIGHTER**